



**GRANDINETTI**  
**ENGINEERING**



THE ENGINEERING DESIGN COMPANY

COMPANY PROFILE **2025**

# FACTS AND FIGURES

30+

YEARS

1000+

PROJECTS

40

EXPERTS

15

ENGINEERS

3

COUNTRIES





Grandinetti Engineering is a smart DESIGN & ENGINEERING STUDIO with years of experience. Our task is to continuously update the approach to automotive and railway engineering according to technology, process development and innovation but above all in compliance to customer expectations.



## ENGINEERING SERVICES

# OUR HISTORY

Grandinetti Engineering is established in Turin starting from 1988, with over 30 years of experience can claim continuous updating and the presence alongside global brands around the world.



## 1988

Established in Turin, opened the doors to the world of the automotive and industrial heat shielding.

## 2006

«Frecciargento – Trenitalia Project» The New Pendolino design for High speed Train is the result of one year and six months of study and research in collaboration with Italdesign and Alstom.

## 2016

«Maserati Levante first Suv of the Brand»  
Best Maserati engineering partner to develop together the first suv of the brand.

## 2024

«Stellantis Ducato Hydrogen & STLA projects»  
With our skills in the technologies of the future, we are partners of the best worldwide automotive brand to reduce the emissions





## AUTOMOTIVE - TRUCK

Vehicle Mechanical Package and Feasibility Design Engineering



## RAILWAY

Mechanical/Electric Integration and Interior layout



## MARINE

Mechanical/Electric Integration and Interior layout



## INDUSTRIAL AUTOMATION

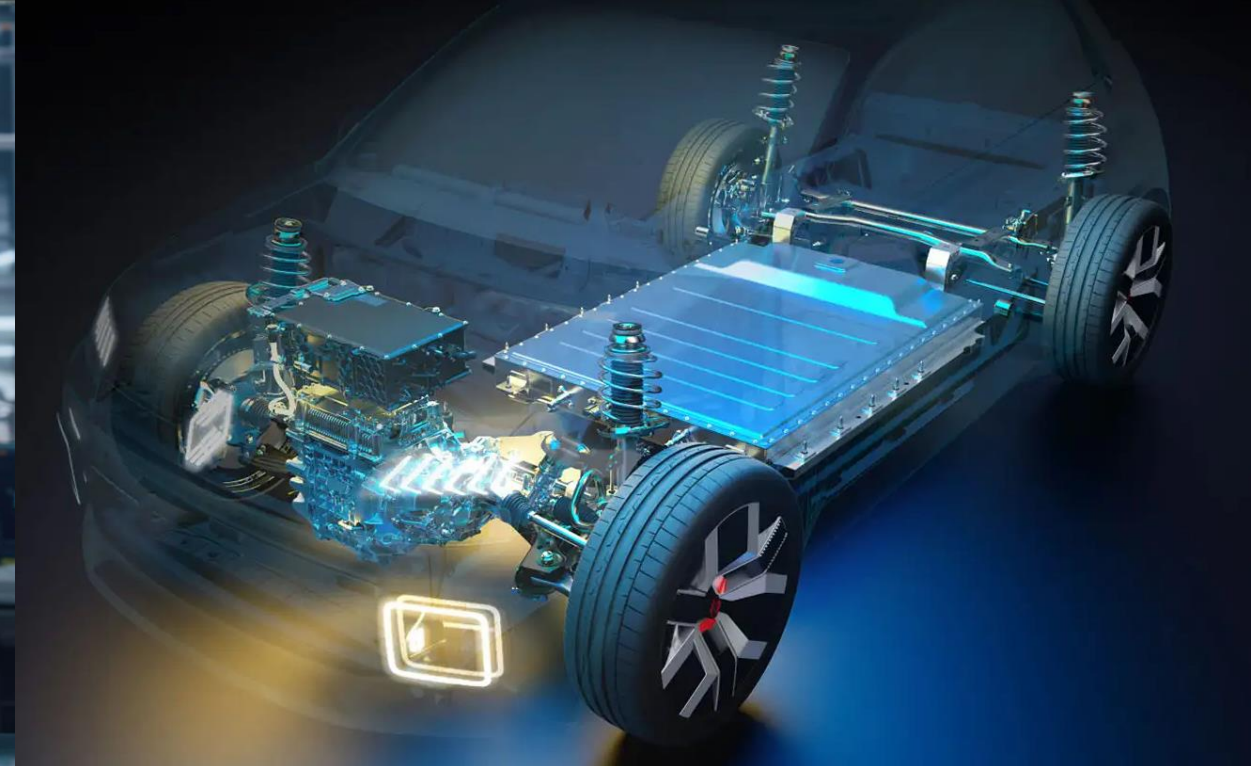
Robotic Machines and control system



## CO-DESIGN

Components industrialization





## VEHICLE MECHANICAL PACKAGE

### Automotive – Truck

Package layout refers to the series of engineering works required to efficiently structure and arrange various limiting conditions of key elements in terms of the overall vehicle.

EXPERTISE

FLEXIBILITY

GOAL  
ORIENTED



## AUTOMOTIVE – TRUCK

### Feasibility Design Engineering

Feasibility of body structure and exterior / interior trims as a marriage between technologies of transformation for materials and legal constrain leaded by styling requirements.



COMPANY PROFILE 2025



# RAILWAY

GE is a smart DESIGN ENGINEERING STUDIO with years of experience.

Our task is to continuously update the approach to RAILWAY engineering according to technology, process development and innovation but above all in compliance to customer expectations.

**EXPERTISE**

**FLEXIBILITY**

**GOAL  
ORIENTED**







## SKILLS DEVELOPED IN THE RAILWAY SECTOR

### Mechanical/Electric Integration

Starting from a functional schematic we are able to design the pneumatic and electrical Integration.

In Grandinetti Engineering we taking care of all the technical solutions on the products successfully guarantee resistance to all the dynamic stresses that all traveling structures are continuously subjected.

### Interior Layout

Thanks to the strong know-how acquired by our team of experts and technicians, starting from a layout and stylist's design book we can cover the entire process, from Kick off to DaP, monitoring Step by Step the deliverable of each release. Putting in place the specific technical knowledge required by the customer and product suppliers we give priority to the needs of style translated into an industrial product.

### Aerodynamic head-control desk-driver's cab

We transform a style sketch in a industrialize component, joining stylish request, aerodynamic and stress analysis to arrive at the approval to start the production.

In the cabin area from biomechanics and cognitive engineering to physical ergonomic, we give priority to the needs of style translated into an industrial product.



## MARINE

**Mechanical/Electrical Integration and interior layout.** Our technical staff carries out system Integration to satisfy the most complex technical needs, supporting the customer, interacting and collaborating throughout all the stages of the project life cycle to design the complete mechanical integration of electric, cooling and air duct systems.

Reaction times to external stimuli are extremely short, due to the accurate work organization and technical competence, allowing the company to supplier to partner a very “competitive offering”, all the advantages of an internal engineering department able to develop Interior and exterior furniture architecture.

**EXPERTISE**

**FLEXIBILITY**

**GOAL  
ORIENTED**



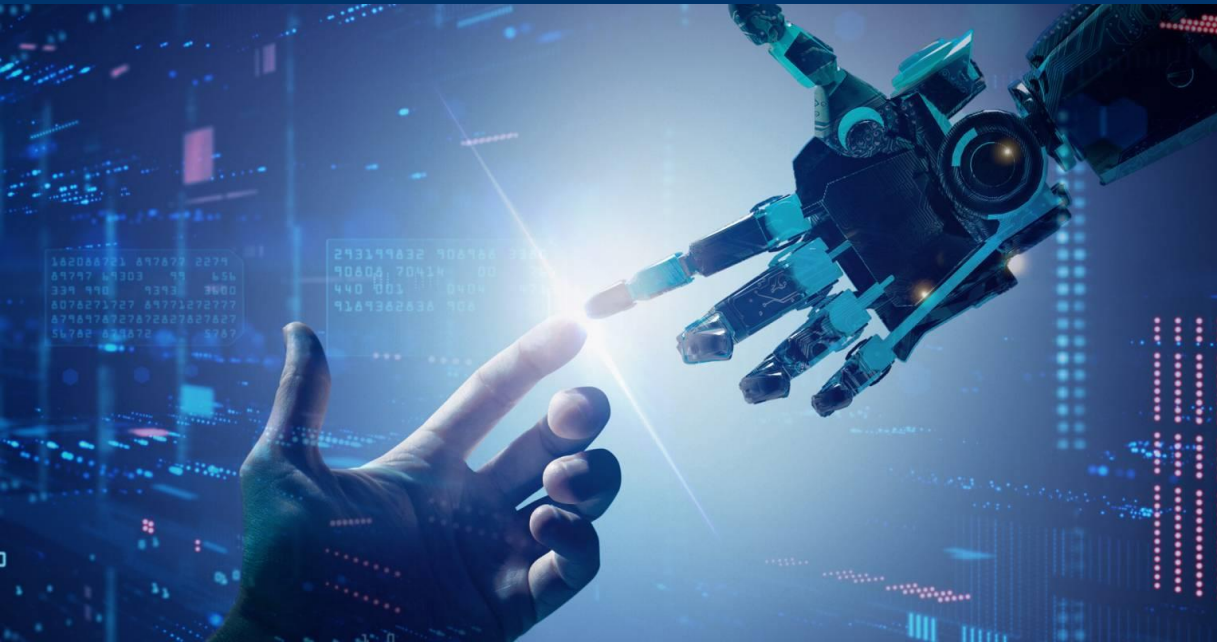
# INDUSTRIAL AUTOMATION

## Robotic Machines and control system

Grandinetti Engineering staff is able to design industrial automation solutions for the handling, assembly and testing of different types of products in the general mechanical industry.

"One day machines will be able to solve all problems, but none of them will ever be able to solve one." (Albert Einstein)





## CO-DESIGN

Grandinetti Engineering is able to cover the entire lifecycle of an Industrial component from the Kick – Off to the Start of Production.

### Components Industrialization

GE efficiently integrates the experience of the manufacturing company with the design company to optimize the final result.

### Virtual Simulations

- Fem - Stress Analysis
- Dynamic Simulation
- Aerodynamic Simulation
- Fluids dynamics
- Crash
- Sizing Of The Systems

### CAD/CAM

Received the component we are able to design the:

- CAD mounting jig
- CAM tool path
- DESIGN MOLDS



# CLIENTS



# CERTIFICATE

**TISAX**<sup>®</sup>



- Grandinetti Engineering brillantly exceed audit for Tisax and ISO 9001 certification

# CONTACTS



## **GRANDINETTI ENGINEERING S.R.L.**

Strada del Drosso 33/7 – 10135 Torino

Phone: + 39 011 0230102

Site: <https://grandinettieng.it/>



Commercial Dept.

**Antonio Passaro**

Mobile: +39 3473058876

E-mail: [antonio.passaro@grandinettieng.it](mailto:antonio.passaro@grandinettieng.it)

Technical Dept.

**Corrado Stramazzo**

Mobile: +39 3482418502

E-mail: [corrado.stramazzo@grandinettieng.it](mailto:corrado.stramazzo@grandinettieng.it)

Technical Dept.

**Fabio Dalmasso**

Mobile: +39 3495297227

E-mail: [fabio.dalmasso@grandinettieng.it](mailto:fabio.dalmasso@grandinettieng.it)